

# DH1 Linear

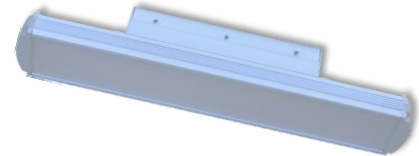
2' Linear High Flux Luminaire

Project	Type
Catalog Number	

Rev # 4/27/17-1

## Description

For a retail or commercial application, US LED offers the overachieving DH1. The DH1 is a pleasing aesthetic with powerful performance through a diffused lens, with the thin and lightweight profile facilitating simple suspended installations. The DH1 luminaire offers a streamlined 24" design while providing remarkable light output in a slim package at a persuasive cost



## Features

- Rated for damp locations
- Class 2 compliant design (low voltage, limited power)
- 5-year warranty



## Specifications - Average values for family products

Dimensions (in)	24.6" x 4.1" x 4.4"
Units / Carton	1
Net Weight	5.75 lbs.
Environmental Rating	Dry

## Certifications

- UL Listed USA and Canada File (# E338791)
- DesignLights Consortium® qualified (5000K CCT Only)
- LM-79 available

Energy Data	3500K	4000K	5000K
Input Voltage (VAC)	120-277	120-277	120-277
System Level Power (W)	45	45	45
Delivered Lumens (Lm)	4,400	4,545	4,665
System Efficacy (Lm/W)	97	100	103
Color Temperature (K)	3500	4000	5000
Color Rendering Index (CRI)	80 min	80 min	80 min
L70 Calculated Life (Hrs.)*	>200,00	>200,00	>200,00
L85 Calculated Life (Hrs.)*	158,00	158,00	158,00
Operating Temp (°C)	- 30 to 40	- 30 to 40	- 30 to 40

\* US LED product 'Lifetimes' refer only to the LED light engine, not the power source, and are based on the Illuminating Engineering Society's TM21 Calculated Lumen Maintenance methodology at a 25°C/77°F ambient temperature. The lifetimes are solely meant to be a guide for expected LED degradation and not a warranty or predictive of their actual life, which can be affected by ambient temperatures and other factors. \*\* Measured at 277VAC

## Ordering Information

Series	Variant	Driver	Color Temp	End Cap	Fixture Color
DH1	2 - High	1 - AC Driver	35 - 3500K 40 - 4000K 50 - 5000K	1 - Standard	1 - Black 2 - White

Example: DH1-2-1-40-1-2

## Power Supply Information

Ordering Part Number	Driver
PUJ-UNV2-1050-1	1050mA Dimming Driver, Black
PUJ-UNV2-1050-2	1050mA Dimming Driver, White

# DH1 Linear

2' Linear High Flux Luminaire

Project	Type
Catalog Number	

## Accessories

Ordering Part Number	Description
DGOS-1	Leviton Occupancy Sensor (Black)
DGOS-2	Leviton Occupancy Sensor (White)
30202	16' - Aircraft cable mounting kit
30200	20' - Aircraft cable mounting kit

